



# **Program Analysis and Evaluation (PA&E)**

Dr. Scott Pace

Associate Administrator for Program Analysis and Evaluation



# History

Office of Program Analysis and Evaluation

- **Program Analysis and Evaluation (PA&E) was only recently created (29 April 2005).**
- **Comprised of parts of several offices from across the Agency**
  - **Advanced Planning and Integration Office (Administrator)**
  - **Strategic Investment (OCFO)**
  - **Cost Analysis (OCFO)**
  - **Indep Program Assessment Office (OCE)**
  - **Inst. Planning, Inst. Mgmt., Infrastructure and Admin., One NASA (OI&M)**
  - **Office of the Chief Scientist**
- **Personnel from these organizations have been transferred to PA&E, associated funds will transfer in FY06**
- **APIO was the only independent entity in the budget structure and the only entity reflected in the initial budget submit – transfers and new structure have been accounted for in PMI<sup>2</sup> mapping**



# PA&E Functions

Office of Program Analysis and Evaluation

- **Provide objective studies and analyses to assist the Administrator in making well informed strategic decisions.**
- **Reports to the Administrator with the responsibility to assess program performance, make recommendations, perform cost analyses, and conduct strategic planning.**
- **Staff Management Councils**
  - **NASA controls all strategic management processes through its governance structure, which consists of three Agency-level management councils.**
  - **The Strategic Management Council determines NASA strategic direction at the vision and mission level, and it assesses the Agency's progress on this level as well. The Office of Program Analysis and Evaluation provides functional support for this council.**
  - **The Program Management Council guides program and project performance, defining successful achievement of NASA strategic goals and objectives. The Office of Program Analysis and Evaluation provides functional support for this council.**
  - **The Operations Management Council reviews and approves *institutional plans*. The Office of Program Analysis and Evaluation provides functional support for this council.**



# PA&E Functions (Cont.)

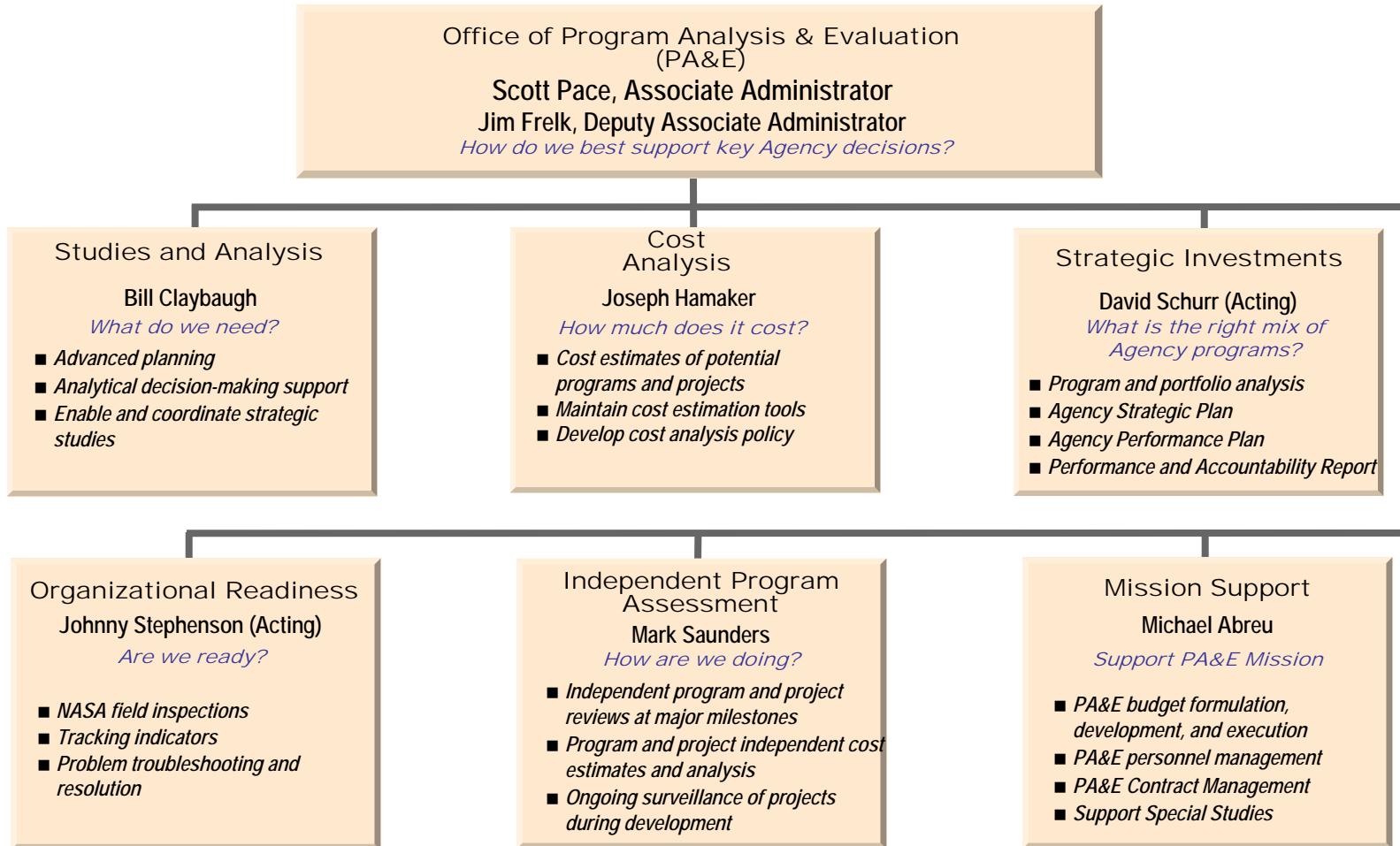
Office of Program Analysis and Evaluation

- **Not a line function to any center or program with no budget authority or line responsibility for any Agency program.**
- **Different from OCE – PA&E provides alternative Courses of Action; OCE provides processes, policies and follow up to affect execution**
- **Different from OCFO – OCFO manages NASA budget for current and budget years, PAE responsible for assessing the Agency's out year portfolio of programs and budget constraints.**



# PA&E Organization

Office of Program Analysis and Evaluation





# PA&E Studies - Completed

Office of Program Analysis and Evaluation

## Tier One Studies

- **Shuttle/Station Configurations Options Team, 60 day study**
  - Pat Ladner, Chair
- **Exploration Systems Architecture Study, 90 day study**
  - Doug Stanley, Chair
- **Workforce Transition Review Team, 30 day study**
  - Jerry Simpson, Chair
- **Education Review Team, 60 day study**
  - Trish Pengra & Mike Kincaid, Co-chairs
- **Surface Fission Working Group, 60 day study**
  - Dave Bartine, Chair

## Tier Two Studies

- **Discovery AO, 30 day study**
  - Mike Tanner, Chair
- **Hubble Space Telescope De-orbit, 60 day study**
  - Marcus Shaw & Julie Crooke, Co-chairs
- **Technology Transfer RFP, 30 day+ study**
  - Phil McAlister & Owen Barwell, Co-chairs
- **Delta II Cost/Benefit Analysis, 30 study**
  - Mike Rampino, Chair
- **Advisory Function Review, 30 day+ study**
  - Trish Pengra, Chair
- **Competitive Earmarks Analysis, 30 day study**
  - Howard Ross



# PA&E Studies - Ongoing Tier 1

Office of Program Analysis and Evaluation

- **Tier One Studies**
- **James Webb Space Telescope Special Assessment, 90 day study (extended)**
  - Jeff Jones, Chair
- **Systems Engineering and Institutional Transitions Team (SEITT), 180 day study**
  - Mike Benik & Mark Geyer, Co-chairs
- **Mission Management Aircraft Study, 30 day study**
  - Terry Reese, Chair
- **HQ Workforce Assessment, 120 day study**
  - Mark Saunders, Chair
- **Inter-center Fund Transfer, long term study**
  - Johnny Stephenson & Pedro Jimenez, Co-chairs
- **Exploration Safety Architecture Review, time TBD**
  - Joe Fragola, Chair



# PA&E Studies - Ongoing Tier 2

Office of Program Analysis and Evaluation

- **Zero-gravity Aircraft Trade Study, 30 day study**
  - Phil McAlister, Chair
- **ISS Commercial Re-supply Study, long term study**
  - Phil McAlister, Chair
- **Nuclear R&T Portfolio Study, 30 day study**
  - Len Dudzinski, Chair
- **Re-entry Shape Analysis, 120 day study**
  - John Cassanto to Scott Pace
- **Lunar Reconnaissance Orbiter LEND Analysis, 120 day study**
  - Robert T. Frazier
- **Long Term Agency Plan for the Verification of Large Space Telescope Observatories. 6 month study**
  - Julie Crooke, Chair
- **Centrifuge Accommodation Module, Time TBD**
  - Marcus Shaw, Chair
- **Management Tools and Integration Assessment, long term study**
  - Mike Tanner, Chair with LDP class
- **Capability Roadmap Recommendations for NASA's Venture Capital Fund, 120 day study**
  - Barbara Kreykenbohm & Tom Inman, Co-chairs
- **Program Management Information Task Team, long term study**
  - Dot Swanson, Chair
- **Erasmus Requirements Study Steering Group, 6 month study**
  - Julie Pollitt, Chair
- **Implementation of PPBS, long-term study**
  - David Schur & Gwen Sykes, Co-chairs